

INDEX OF SHEETS

SHEET NO. 1	TITLE
SHEET NO. 2	TYPICAL CROSS SECTIONS
SHEET NO. 3	ESTIMATE OF QUANTITIES
SHEET NO. 3	MISCELLANEOUS QUANTITIES
SHEET NO. 4-14	RIGHT OF WAY PLAT
SHEET NO. 4-14	PLAN AND PROFILE STA. 1+00 TO STA. 306+92
SHEET NO.	DRAINAGE STRUCTURES AND STANDARD DETAILS
SHEET NO. 15-71	CROSS SECTIONS

STATE OF WISCONSIN  
**STATE HIGHWAY COMMISSION OF WISCONSIN**

FED. ROAD DIST. NO.	STATE	PROJ. NO.	SHEET NO.	TOTAL SHEETS
4	WISC.	S020(1)	1	71

DIVISION JOB NO.

COUNTY AND HIGHWAY	ROUTE AND SECTION	CLASS AND AGREEMENT		FEDERAL DIVISION OFFICE	SHEET NUMBER	TOTAL SHEETS
		STATE	FEDERAL			
22.6	201.0		11.1	WIS. 5N	1	71

PLAN AND PROFILE OF PROPOSED  
**GLEN HAVEN — NORTH ANDOVER ROAD**  
 GRANT COUNTY  
 PROJ. S O 201 (1)

PROJ. S0201(1) BEGINS AT A POINT 657' W. & 1590' N. OF CENTER  
 SECT. 15 - T.4 N. - R.6 W. - THENCE EASTERLY TO A POINT 810' E. &  
 380' N. OF S. 1/4 COR. SECT. 16 - T.4 N. - R.5 W.

SCALES  
 PLAN 1 IN. = 100 FT.  
 PROFILE HOR. 1 IN. = 100 FT. VERT. 1 IN. = 10 FT.  
 CROSS SECTIONS HOR. 1 IN. = 5 FT. VERT. 1 IN. = 5 FT.



STA. 1+00  
 BEG. OF PROJECT  
 PROJ. S0201 (1)  
 657' W. & 1590' N. OF THE CENTER  
 SECT. 15 - T.4 N. - R.6 W.

STA. 307+69 PROJ. S0201 (1) =  
 STA. 42+00 PROJ. T O 200 (1)

STA. 306+92  
 END OF PROJECT  
 PROJ. S0201 (1)  
 810' E. & 380' N. OF S. 1/4 COR.  
 SECT. 16 - T.4 N. - R.5 W.

CONVENTIONAL SIGNS

STATE LINE	CULVERTS IN PLACE
COUNTY LINE	CULVERTS REQUIRED
TOWNSHIP OR RANGE LINE	DROP INLET
SECTION LINE	POWER POLE
NEW RIGHT OF WAY LINE	TELEPHONE OR TELEGRAPH POLE
PRESENT RIGHT OF WAY LINE	RIGHT OF WAY MARKERS
WIRE FENCE (WOVEN)	REFERENCE STAKE FOR HUBS ONLY
WIRE FENCE (BARBED)	MARSH
LOT LINE	HEDGE
CORPORATE OR CITY LIMITS	TREES
PROPERTY LINE	GROUND ELEVATION
TRAVELED WAY OR P.E.	DATUM LINE
RAILROADS	GRADE ELEVATION
BASE OR SURVEY LINE	

LAYOUT

SCALE 0 1 2 MI.

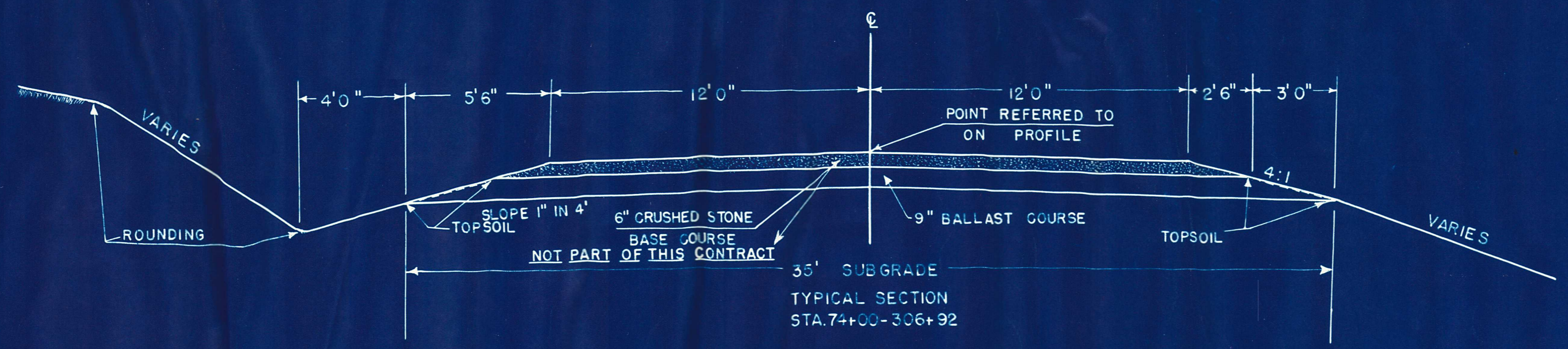
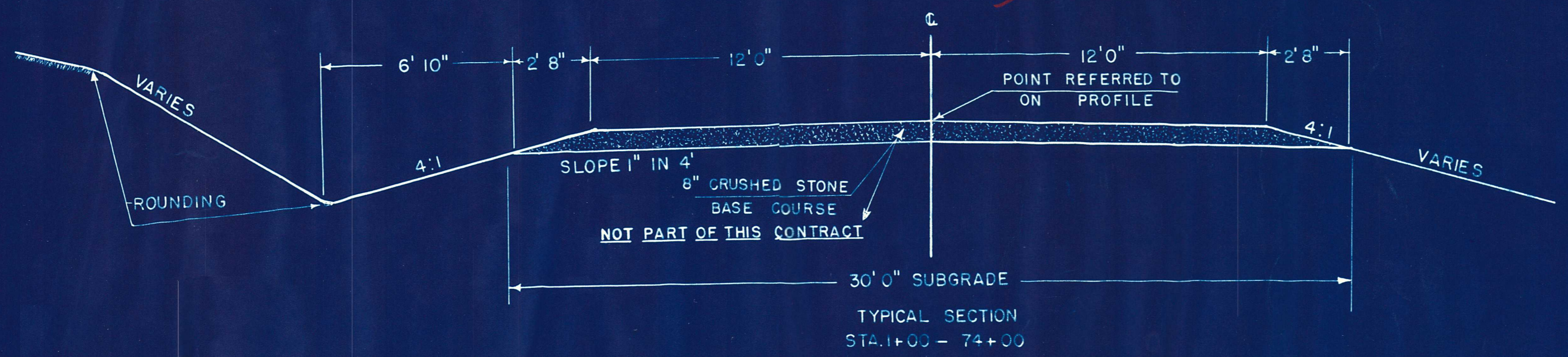
TOTAL NET LENGTH OF CENTERLINE 5.813 MI.

APPROVED FOR  
 GRANT COUNTY HIGHWAY COMMISSION  
 3/8/51  
 DATE *Eugene Craft*

STATE HIGHWAY COMMISSION OF WISCONSIN MADISON, WIS.		U.S. DEPARTMENT OF AGRICULTURE BUREAU OF PUBLIC ROADS	
Surveyor	Note Book	RECOMMENDED FOR APPROVAL:	
Div. Computer	M. O. Checker	DISTRICT ENGINEER	
Div. Checker	Correct	CHIEF ENGINEER	
CORRECT:	<i>How W. Reilly</i> DIVISION ENGINEER	APPROVED:	
DATE 3-29-1951		DIRECTOR	
RECOMMENDED FOR APPROVAL:	DATE 19	DATE	
DESIGN ENGINEER	CONSTRUCTION ENGINEER		
APPROVED:	DATE 19		
	STATE HIGHWAY ENGINEER		

COUNTY AND HIGHWAY	ROUTE AND SECTION	CLASS AND AGREEMENT		FEDERAL DIVISION OFFICE	SHEET NUMBER	TOTAL SHEETS
		STATE	FEDERAL			
22.6	201.0		11.1	WIS. 5N	2	71

*Ultimate Section*



TYPICAL CROSS SECTION  
FOR  
24' 0" CRUSHED STONE  
BASE COURSE  
SCALE



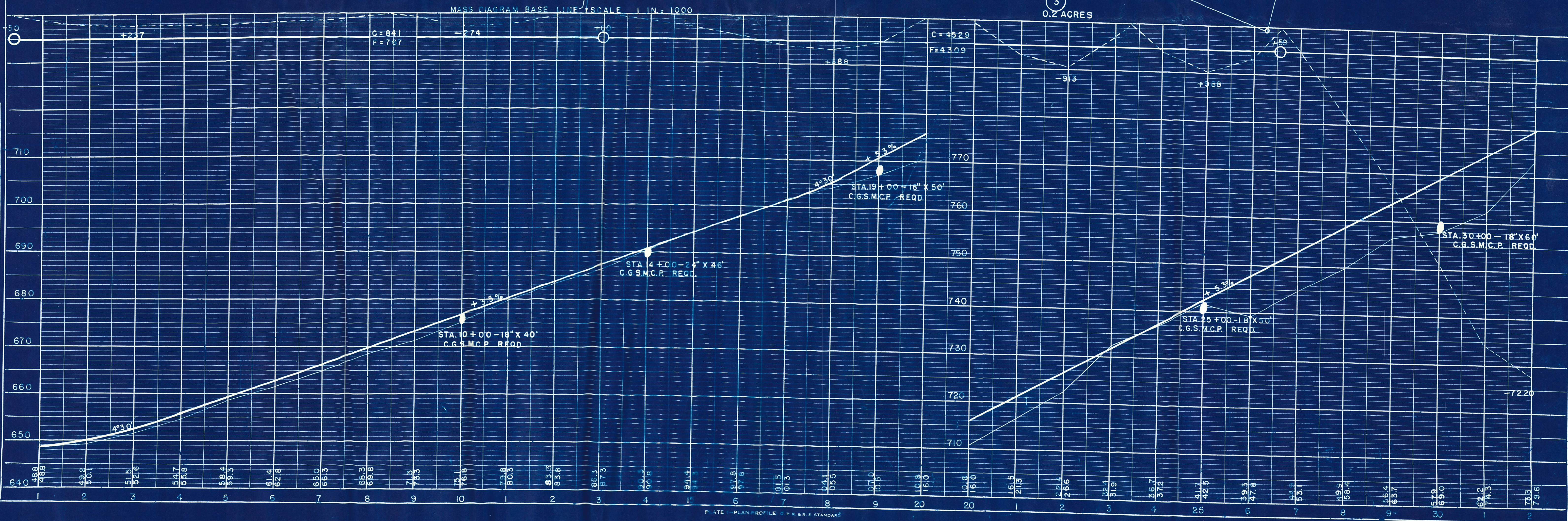
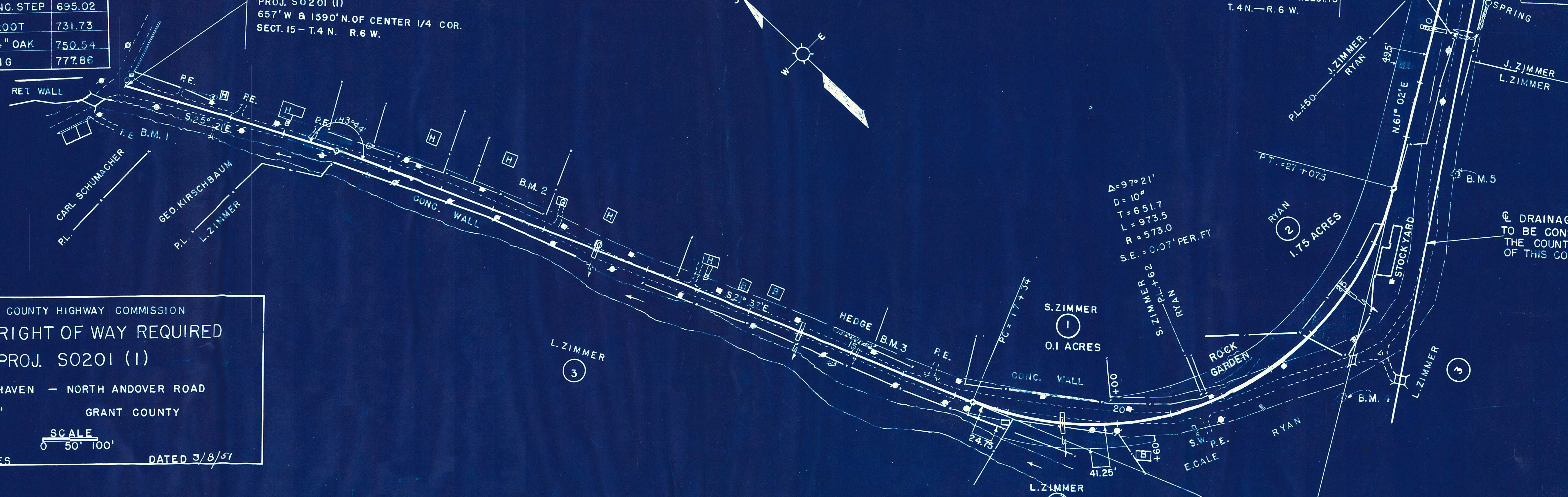
BENCH MARKS			
NO.	STA.	DESCRIPTION	ELEV.
1	1+40	X - ON BR. RAILING	651.58
2	8+15	30' LT. X - IN S.W.	670.12
3	14+92	53' LT. X-ON CONC. STEP	695.02
4	23+75	120' RT. SPIKE IN ROOT	731.73
5	27+50	100' RT. SPIKE 14" OAK	750.54
6	31+50	50' RT. X- RT WING	777.86

STA. 1+00  
 BEG. OF RELOC. ORDER  
 PROJ. S0201 (1)  
 657' W & 1590' N. OF CENTER 1/4 COR.  
 SECT. 15 - T.4 N. R.6 W.

STA. 30+60  
 1075'E. & 49.5'S.  
 CENTER 1/4 COR. SECT. 15  
 T.4 N. - R.6 W.

PROJECT	SHEET NUMBER	TOTAL SHEETS
SO 201 (1)	4	71

GRANT COUNTY HIGHWAY COMMISSION  
**PLAT OF RIGHT OF WAY REQUIRED**  
 PROJ. S0201 (1)  
 GLEN HAVEN - NORTH ANDOVER ROAD  
 C.T.H. "V" GRANT COUNTY  
 SCALE  
 0 50' 100'  
 LENGTH 5.813 MILES DATED 3/8/57



DATE \_\_\_\_\_ BY \_\_\_\_\_  
 SURVEYED \_\_\_\_\_  
 NOTE BOOK \_\_\_\_\_  
 ALIGNMENT CHECKED \_\_\_\_\_  
 RT. OF WAY CHECKED \_\_\_\_\_  
 NO. \_\_\_\_\_

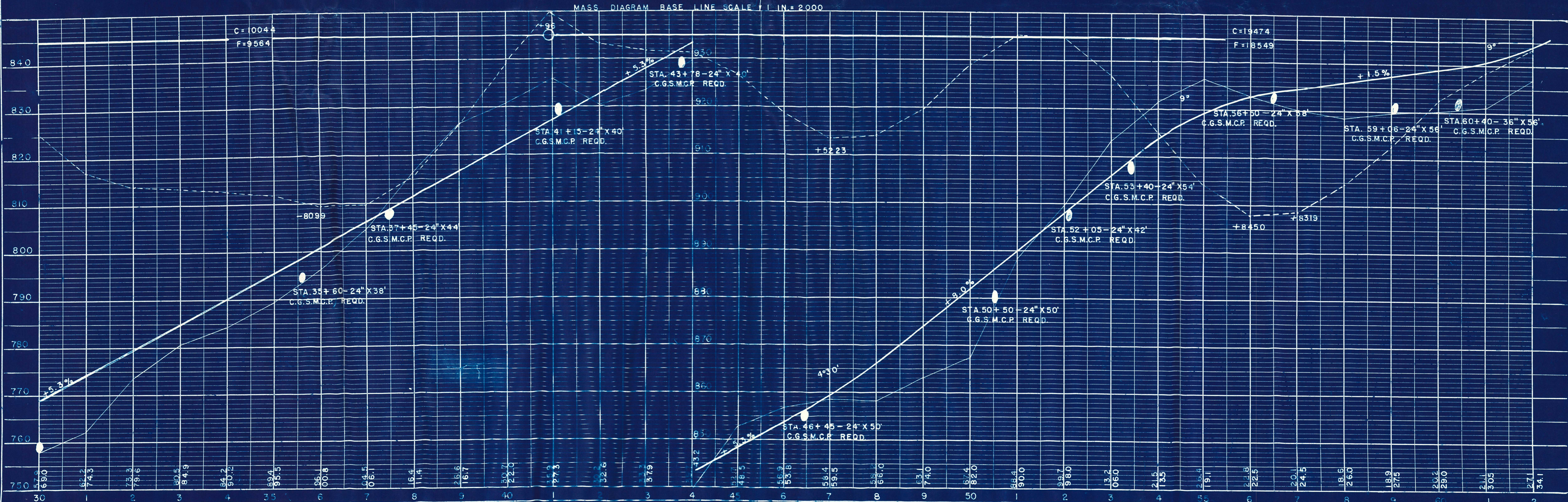
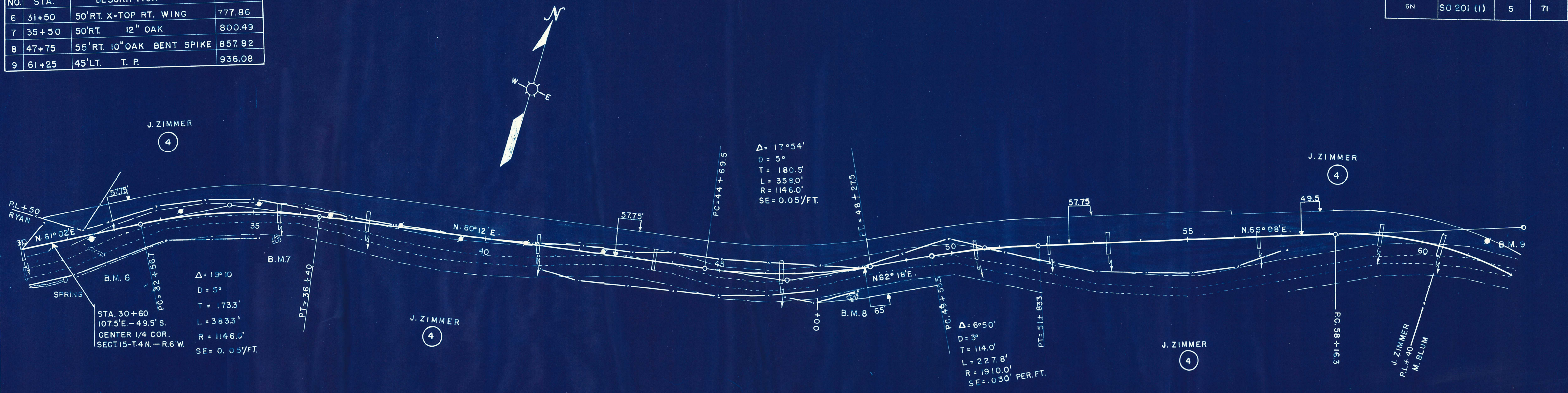
DATE \_\_\_\_\_ BY \_\_\_\_\_  
 SURVEYED \_\_\_\_\_  
 NOTE BOOK \_\_\_\_\_  
 GRADES CHECKED \_\_\_\_\_  
 B.M.'S NOTED \_\_\_\_\_  
 STRUCTURE NOTATIONS CHKO. \_\_\_\_\_  
 NO. \_\_\_\_\_

BENCH MARKS			
NO.	STA.	DESCRIPTION	ELEV.
6	31+50	50' RT. X-TOP RT. WING	777.86
7	35+50	50' RT. 12" OAK	800.49
8	47+75	55' RT. 10" OAK BENT SPIKE	857.82
9	61+25	45' LT. T. P.	936.08

B.P.R. DIVISION	PROJECT	SHEET NUMBER	TOTAL SHEETS
5N	SO 201 (1)	5	71

PLAN	DATE
SURVEYED	
NOTE BOOK	
NO.	

PROFILE	DATE
SURVEYED	
NOTE BOOK	
NO.	

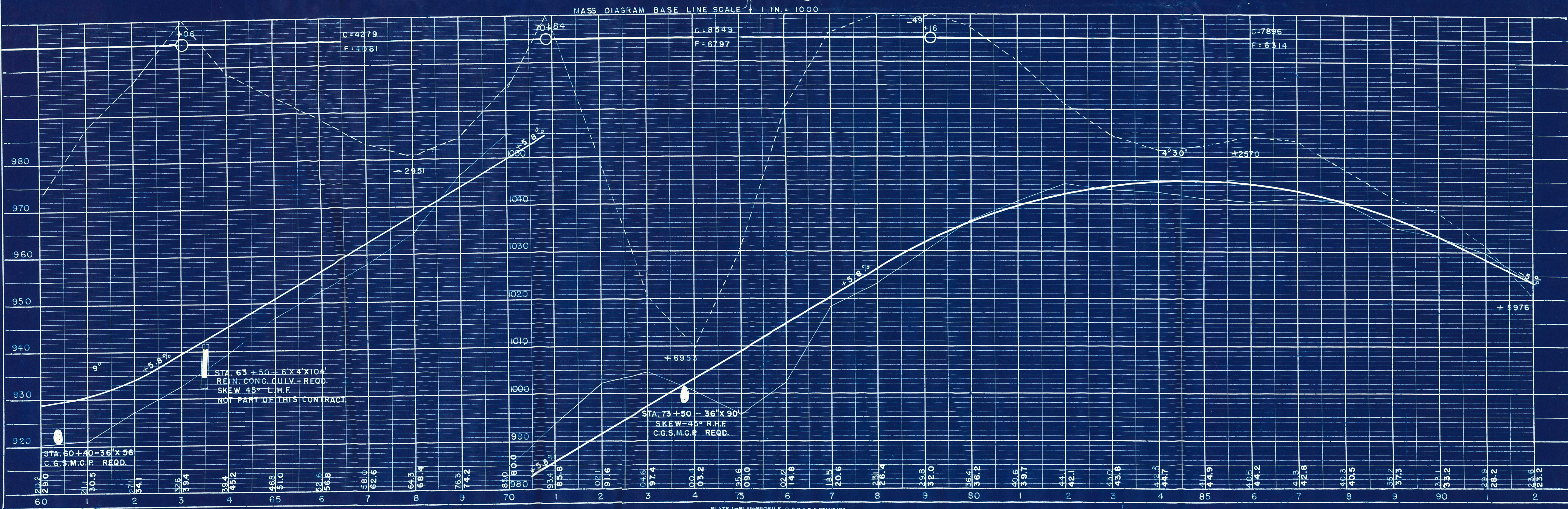
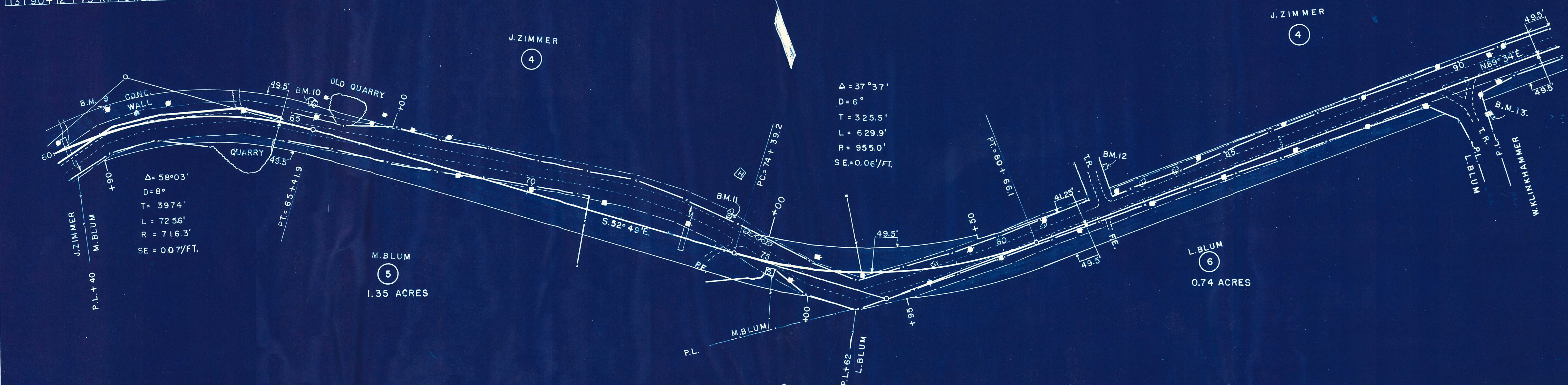


BENCH MARKS			
NO	STA.	DESCRIPTION	ELEV.
9	61+25	45' LT. TELEPHONE POLE	936.08
10	65+25	60' LT. TWIN POPULARS	957.65
11	74+10	75' LT. X ON WALL	1001.30
12	82+50	100' LT. X PUMP PLATFORM	1045.36
13	90+12	75' RT. POWER POLE	1038.66

B.P.R. DIVISION	PROJECT	SHEET NUMBER	TOTAL SHEETS
5N	SO 201 (1)	6	71

PLAN	DATE
SURVEYED	
PLOTTED	
NOTE BOOK	
NO.	

PROFILE	DATE
SURVEYED	
NOTE BOOK	
NO.	

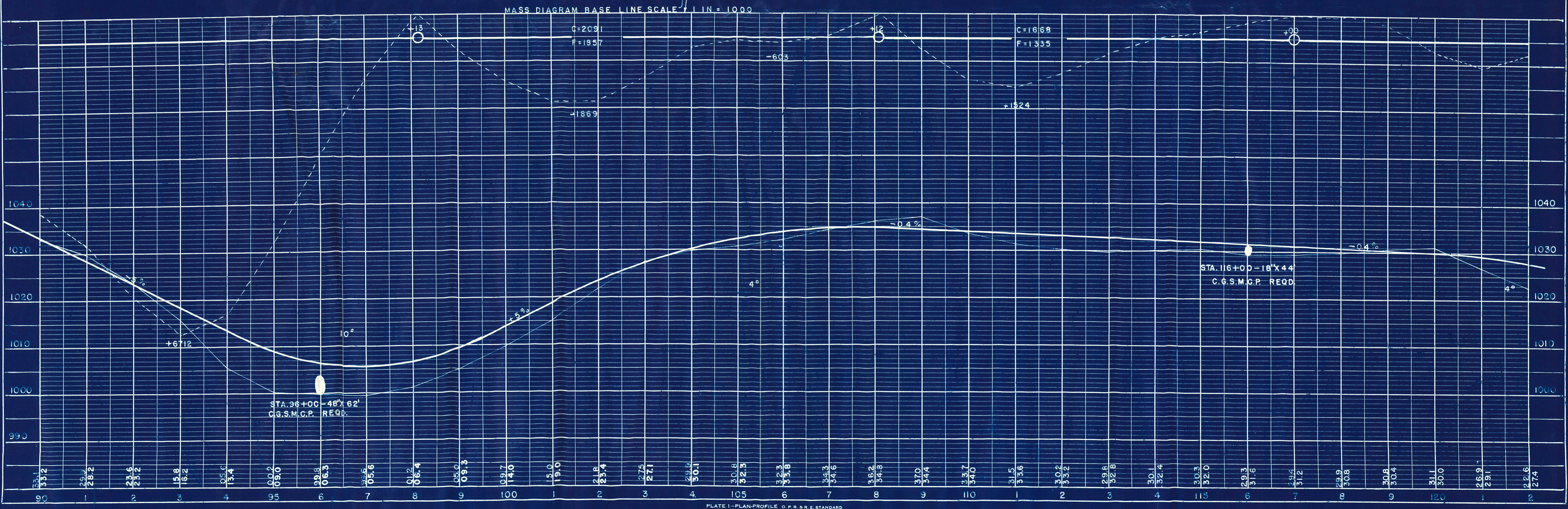
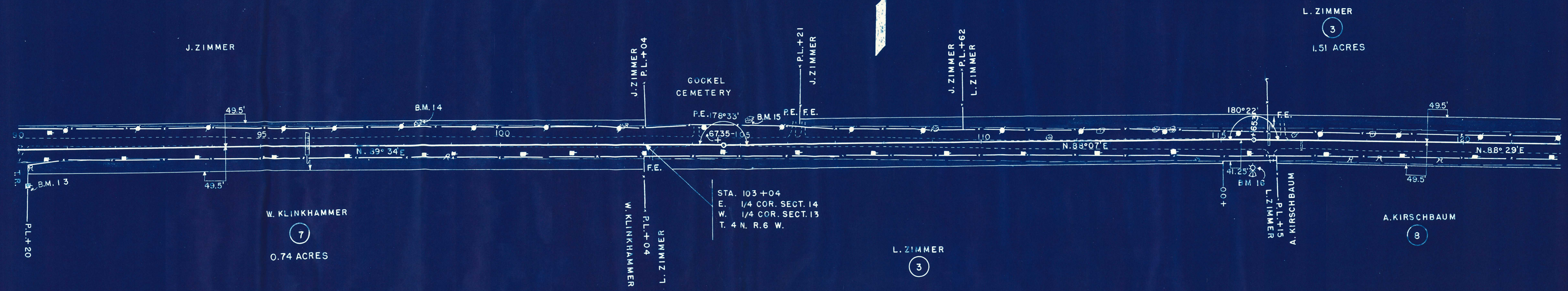


D.P.R. DIVISION	PROJECT	SHEET NUMBER	TOTAL SHEETS
5N	SO 210 (1)	7	71

BENCH MARKS			
NO	STA.	DESCRIPTION	ELEV.
13	90 + 12	75' RT. POWER POLE	1038.66
14	98 + 30	45' LT. 30" ELM	1010.53
15	105 + 10	45' LT. 24" PINE	1031.93
16	115 + 65	60' RT. X WINDMILL PLAT.	1030.73

PLAN	SURVEYED	DATE
NOTE BOOK	PLOTTED	
NO.	ALIGNMENT CHECKED	
	RT. OF MAT. CHECKED	

PROFILE	SURVEYED	DATE
NOTE BOOK	GRADES CHECKED	
NO.	B.M.S. NOTED	
	STRUCTURE NOTATIONS CHKD.	

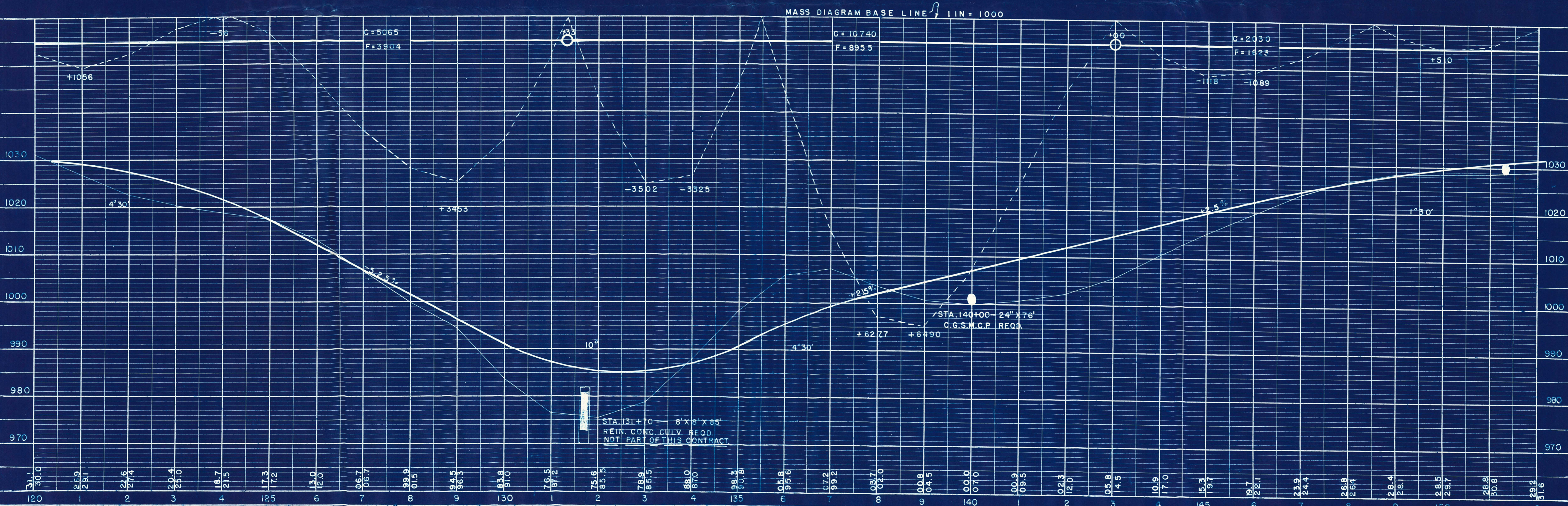
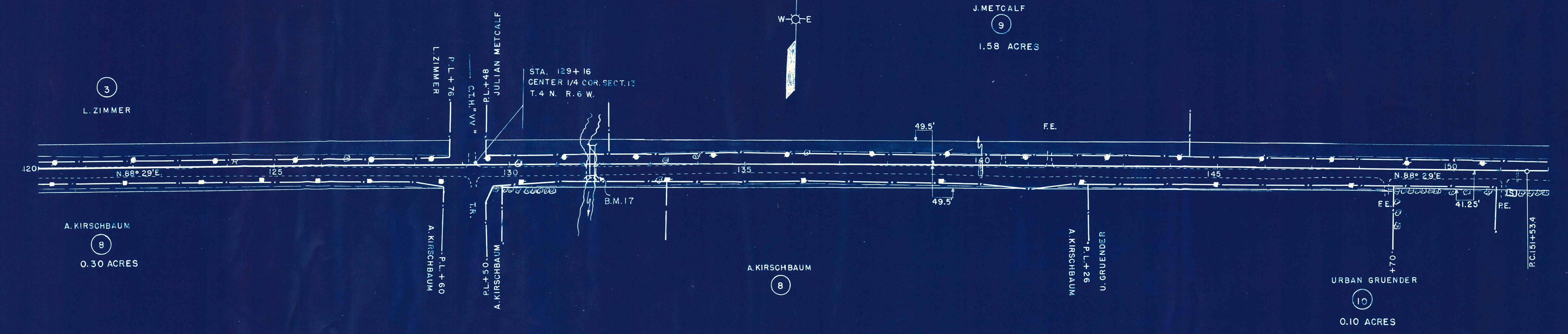


BENCH MARKS			
NO.	STA.	DESCRIPTION	ELEV.
17	132+60	X-SE. COR. BRIDGE	977.56

D.P.R. DIVISION	PROJECT	SHEET NUMBER	TOTAL SHEETS
5N	SO 201 (1)	8	71

PLAN	SURVEYED	DATE
	BY	
	NO. 1	
	NO. 2	
	NO. 3	
	NO. 4	
	NO. 5	
	NO. 6	
	NO. 7	
	NO. 8	
	NO. 9	
	NO. 10	
	NO. 11	
	NO. 12	
	NO. 13	
	NO. 14	
	NO. 15	
	NO. 16	
	NO. 17	
	NO. 18	
	NO. 19	
	NO. 20	
	NO. 21	
	NO. 22	
	NO. 23	
	NO. 24	
	NO. 25	
	NO. 26	
	NO. 27	
	NO. 28	
	NO. 29	
	NO. 30	
	NO. 31	
	NO. 32	
	NO. 33	
	NO. 34	
	NO. 35	
	NO. 36	
	NO. 37	
	NO. 38	
	NO. 39	
	NO. 40	
	NO. 41	
	NO. 42	
	NO. 43	
	NO. 44	
	NO. 45	
	NO. 46	
	NO. 47	
	NO. 48	
	NO. 49	
	NO. 50	
	NO. 51	
	NO. 52	
	NO. 53	
	NO. 54	
	NO. 55	
	NO. 56	
	NO. 57	
	NO. 58	
	NO. 59	
	NO. 60	
	NO. 61	
	NO. 62	
	NO. 63	
	NO. 64	
	NO. 65	
	NO. 66	
	NO. 67	
	NO. 68	
	NO. 69	
	NO. 70	
	NO. 71	

PROFILE	SURVEYED	DATE
	BY	
	NO. 1	
	NO. 2	
	NO. 3	
	NO. 4	
	NO. 5	
	NO. 6	
	NO. 7	
	NO. 8	
	NO. 9	
	NO. 10	
	NO. 11	
	NO. 12	
	NO. 13	
	NO. 14	
	NO. 15	
	NO. 16	
	NO. 17	
	NO. 18	
	NO. 19	
	NO. 20	
	NO. 21	
	NO. 22	
	NO. 23	
	NO. 24	
	NO. 25	
	NO. 26	
	NO. 27	
	NO. 28	
	NO. 29	
	NO. 30	
	NO. 31	
	NO. 32	
	NO. 33	
	NO. 34	
	NO. 35	
	NO. 36	
	NO. 37	
	NO. 38	
	NO. 39	
	NO. 40	
	NO. 41	
	NO. 42	
	NO. 43	
	NO. 44	
	NO. 45	
	NO. 46	
	NO. 47	
	NO. 48	
	NO. 49	
	NO. 50	
	NO. 51	
	NO. 52	
	NO. 53	
	NO. 54	
	NO. 55	
	NO. 56	
	NO. 57	
	NO. 58	
	NO. 59	
	NO. 60	
	NO. 61	
	NO. 62	
	NO. 63	
	NO. 64	
	NO. 65	
	NO. 66	
	NO. 67	
	NO. 68	
	NO. 69	
	NO. 70	
	NO. 71	

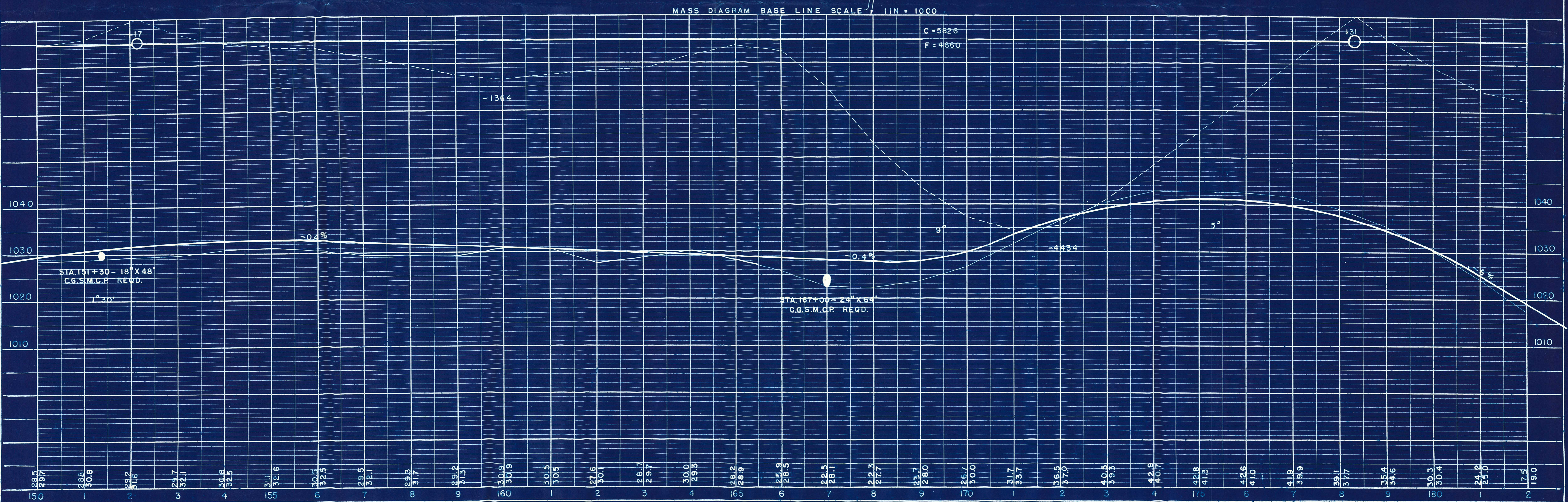
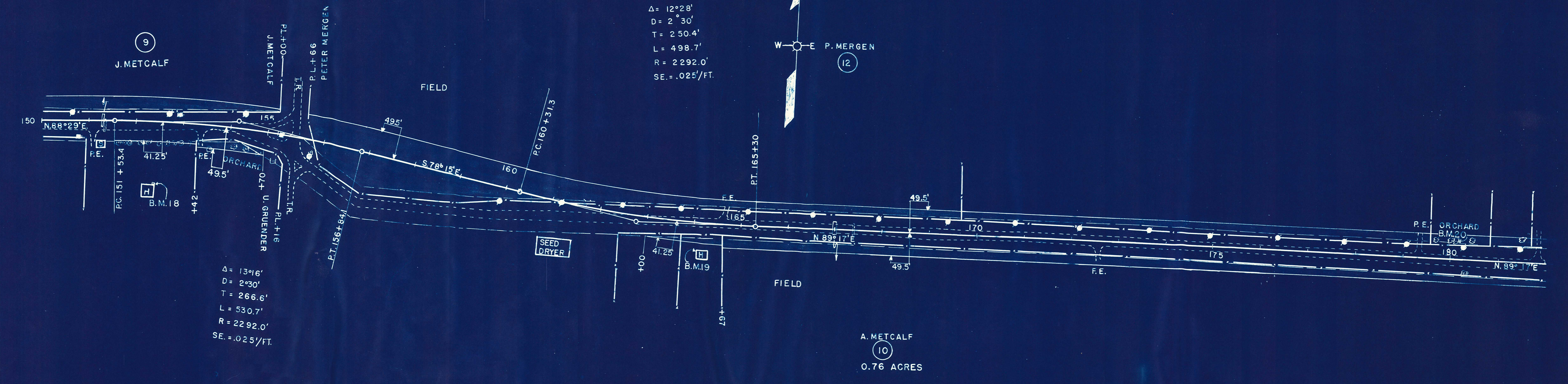


BENCH MARKS			
NO	STA.	DESCRIPTION	ELEV.
18	152+60	50' RT. X N.E. COR. OF STEP	1032.39
19	164+25	50' RT. X N.W. COR. HOUSE	1029.22
20	180+15	40' LT. 16" CEDER TREE	1033.22

B.P.R. DIVISION	PROJECT	SHEET NUMBER	TOTAL SHEETS
5N	SO 201 (1)	9	71

PLAN	DATE
SURVEYED	
PLOTTED	
NOTE BOOK	
NO.	

PROFILE	DATE
SURVEYED	
GRADES CHECKED	
NOTE BOOK	
NO.	



B & R DIVISION	PROJECT	SHEET NUMBER	TOTAL SHEETS
5N	SO 201 (I)	10	71

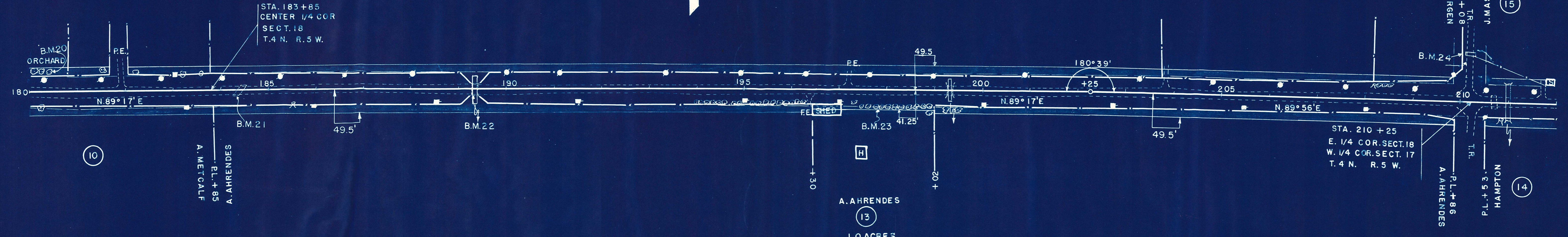
BENCH MARKS			
NO	STA.	DESCRIPTION	ELEV.
20	180+15	40' LT. 16" CEDER	1033.22
21	184+00	X END OF RAILING E. OUTLET	1001.70
22	189+25	13' RT. X RT. RAIL EAST END	988.05
23	197+75	35' RT. LARGE PINE	1014.73
24	210+12	100' LT. CULV. RAIL S.R.	960.36

P. MERGEN  
 (12)  
 2.93 ACRES

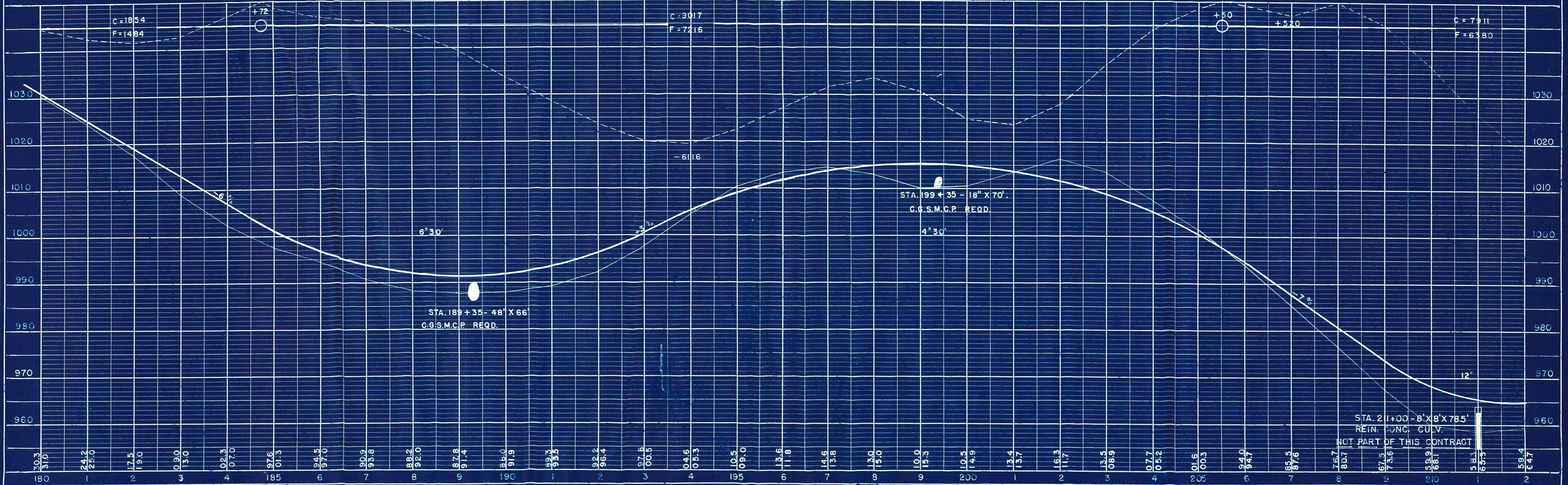
A. AHRENDES  
 (13)  
 1.0 ACRES

(15)

(14)



MASS DIAGRAM BASE LINE SCALE 1 IN = 2000



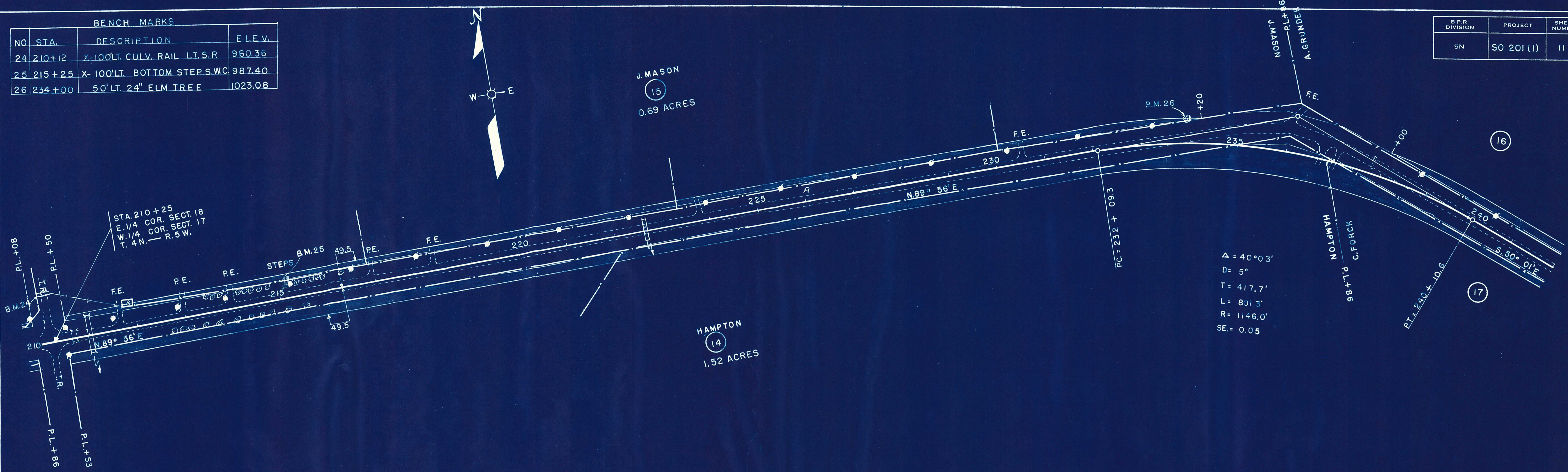
PLAN	DATE
SURVEYED	
NOTE BOOK	
NO.	

PROFILE	DATE
SURVEYED	
NOTE BOOK	
NO.	

BENCH MARKS			
NO.	STA.	DESCRIPTION	ELEV.
24	210+12	Z-100' LT. CULV. RAIL LT.S.R	960.36
25	215+25	X-100' LT. BOTTOM STEPS S.W.C	987.40
26	234+00	50' LT. 24" ELM TREE	1023.08

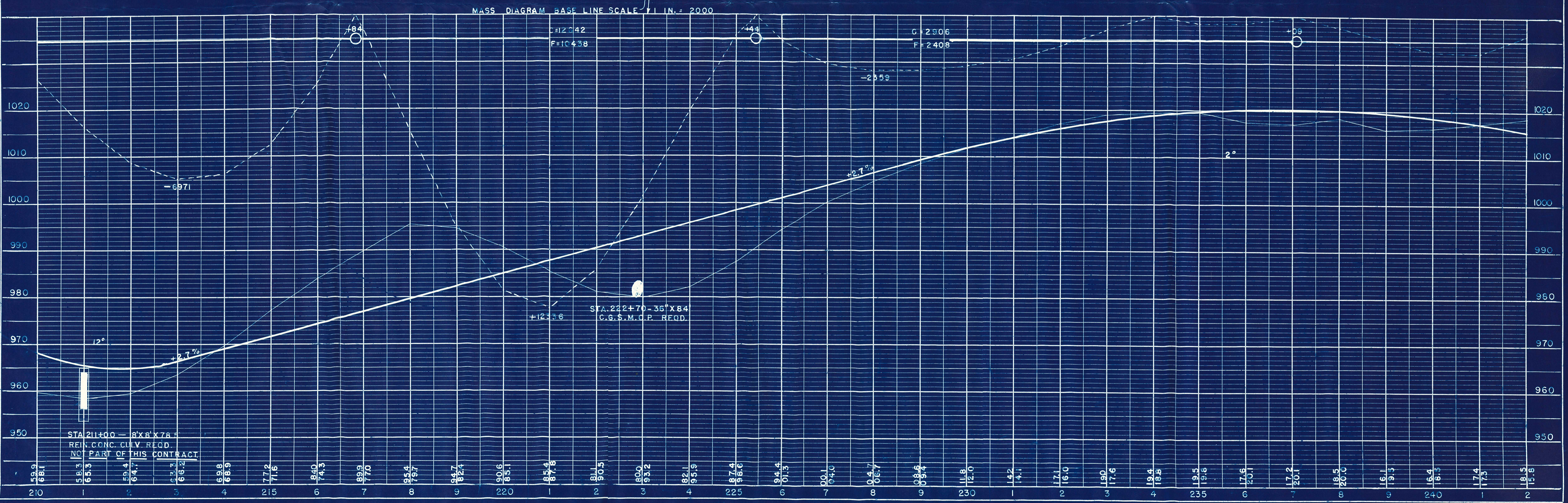
B.P.R. DIVISION	PROJECT	SHEET NUMBER	TOTAL SHEETS
SN	SO 201 (1)	11	71

PLAN	SURVEYED	BY	DATE
NOTE BOOK NO.	PLOTTED		
	GRADES CHECKED		
	STRUCTURE NOTATIONS CHKD.		



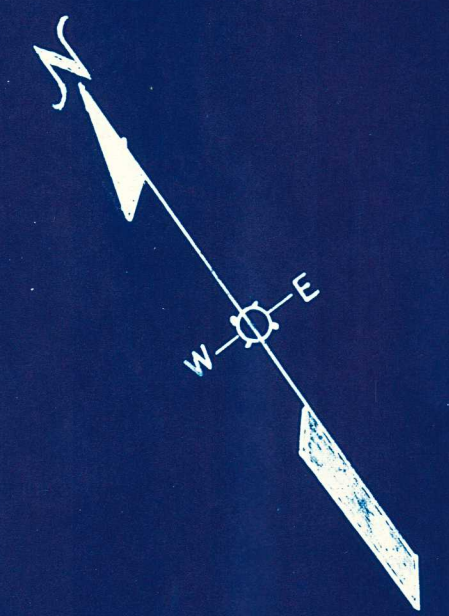
$\Delta = 40^{\circ} 03'$   
 $D = 5'$   
 $T = 417.7'$   
 $L = 801.3'$   
 $R = 1146.0'$   
 $SE = 0.05$

PROFILE	SURVEYED	BY	DATE
NOTE BOOK NO.	PLOTTED		
	GRADES CHECKED		
	STRUCTURE NOTATIONS CHKD.		



B.P.R. DIVISION	PROJECT	SHEET NUMBER	TOTAL SHEETS
SN	SO 201 (1)	12	71

BENCH MARKS			
NO	STA.	DESCRIPTION	ELEV.
27	246+66	10' RT. X ON CULV. RAIL R.S.	1004.11
28	252+33	12' RT. X ON CULV. RAIL	989.00
29	256+64	X ON CULV. RAIL R.S.	993.10
30	267+22	28' RT. 10' ELM IN FENCE LINE	1000.22



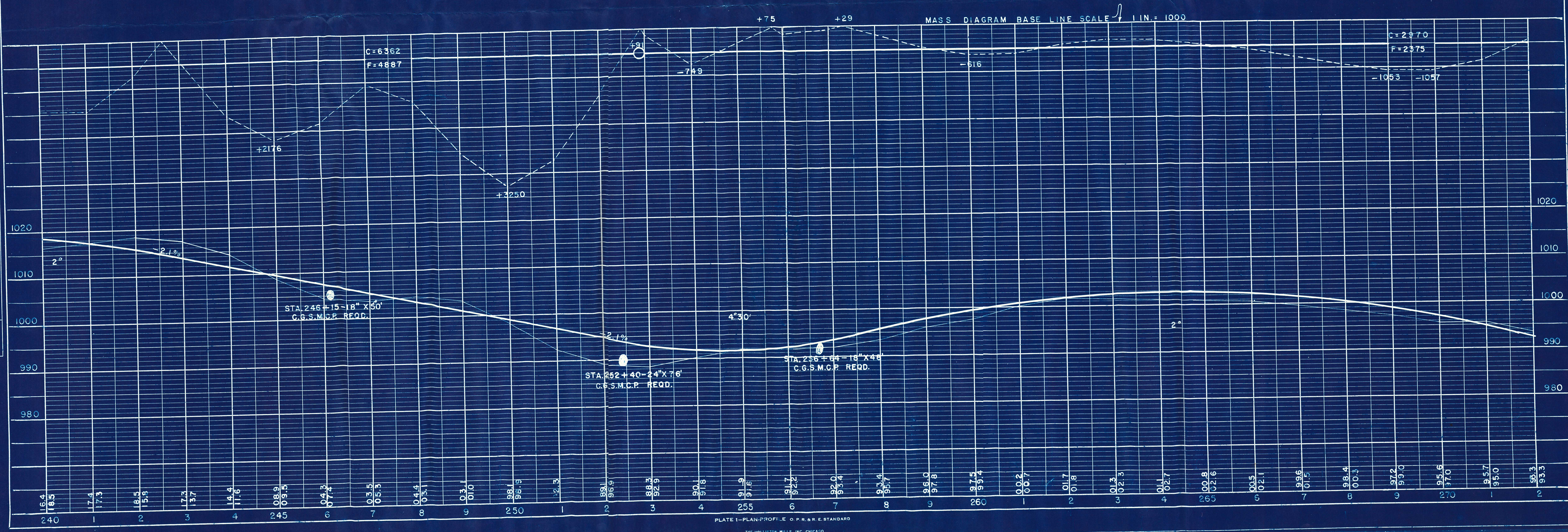
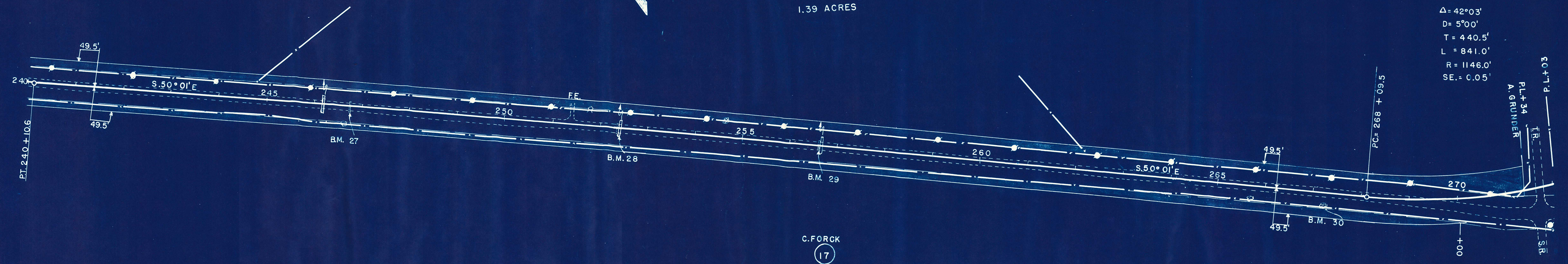
A. GRUNDER  
 (16)  
 1.39 ACRES

C. FORCK  
 (17)  
 1.35 ACRES

$\Delta = 42^\circ 03'$   
 $D = 5^\circ 00'$   
 $T = 440.5'$   
 $L = 841.0'$   
 $R = 1146.0'$   
 $SE. = C.05'$

PLAN	DATE
SURVEYED	
NOTE BOOK	
NO.	

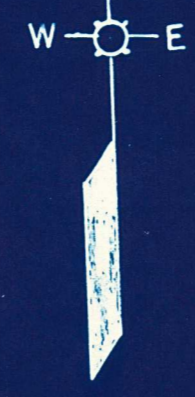
PROFILE	DATE
SURVEYED	
NOTE BOOK	
NO.	



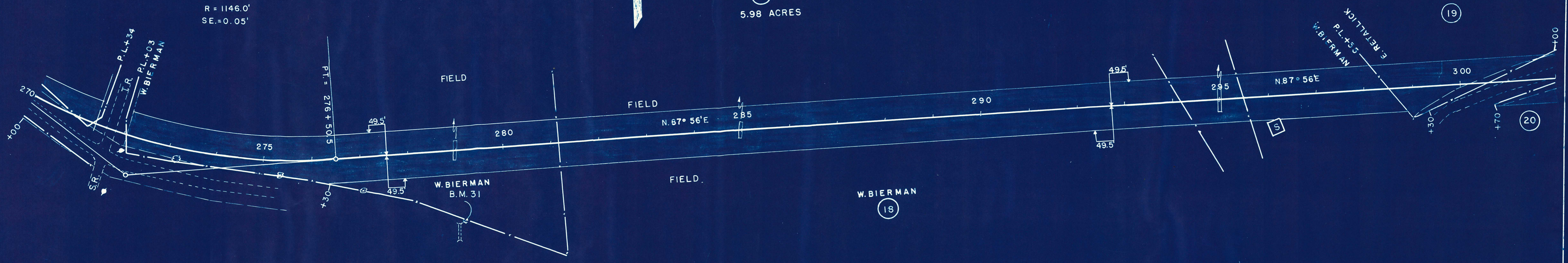
BENCH MARKS			
NO.	STA.	DESCRIPTION	ELEV.
31	279+10	150' RT. X ON CULV. RAIL	975.29

B.P.R. DIVISION	PROJECT	SHEET NUMBER	TOTAL SHEETS
5N	SO 201 (I)	13	71

$\Delta = 42^{\circ}03'$   
 $D = 5^{\circ}00'$   
 $T = 440.5'$   
 $L = 841.0'$   
 $R = 1146.0'$   
 $SE = 0.05'$



PLAN	DATE
SURVEYED	
PLOTTED	
ALIGNMENT CHECKED	
RT. OF WAY CHECKED	
NO.	



PROFILE	DATE
SURVEYED	
PLOTTED	
GRADES CHECKED	
STRUCTURE NOTATIONS CHK'D	
NO.	

