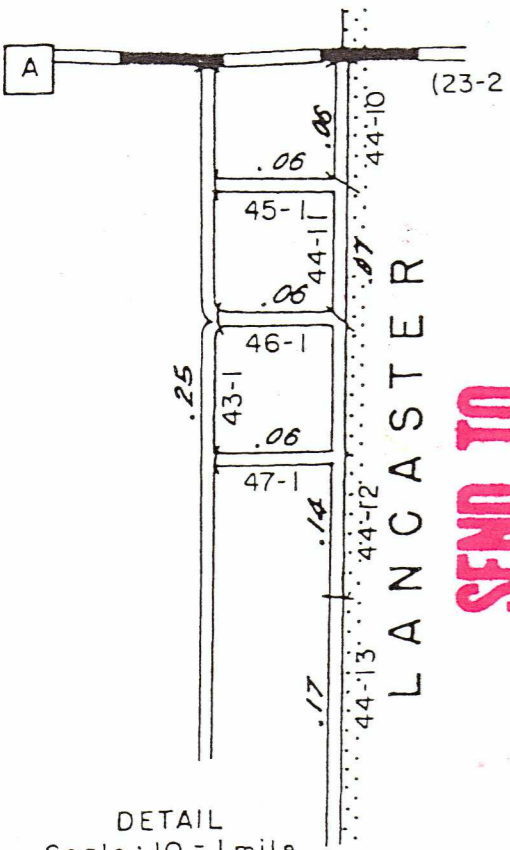


WISCONSIN DEPARTMENT OF TRANSPORTATION
TOWN PLAT RECORD

TOWN OF
SOUTH LANCASTER
COUNTY: GRANT
(22-056)



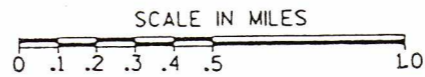
**SEND TO
COUNTY CLERK**

DATE	MILEAGE FOR LOCAL ROADS/STREETS	LOCAL ROADS/STREETS
(1) 4-1-96	43.15	LOCAL ROADS/STREETS Certified in accordance with sec. 86.30 Wls. stat. Signature: <i>Dennis M. Crapp</i> Date: <i>10/5/97</i> Title: <i>Chairman South Lancaster</i>
(2) 1-1-98		
(3) 4-1-98		

- (1) THIS DATA REPRESENT THE LAST CERTIFIED MILEAGE AS CORRECTED BY THE DISTRICT WHICH MAY HAVE BEEN USED FOR PAST TRANSPORTATION AIDS.
- (2) THE TOWN CHAIRMAN OR CITY/VILLAGES CLERK IS TO FILL IN THE MILEAGE TO BE CERTIFIED AS OPEN TO THE PUBLIC AS OF THE FOLLOWING JANUARY, INCLUDING THE NEW CHANGES THAT ARE MADE ON THE PLAT.
- (3) THIS DATA REPRESENTS MILEAGE ADJUSTMENTS MADE BY THE D.O.T. DISTRICT DUE TO FIELD VERIFICATION, INVENTORY, ANNEXATION, ETC. TRANSPORTATION AIDS PAYMENTS MAY BE MADE BASED ON THIS FIGURE.

LEGEND							
STATE TRUNKS	CONN. HIGHWAY	COUNTY TRUNKS	LOCAL ROAD/STREETS	RUSTIC ROAD	Non-pay ROAD/STREETS	CORPORATE LIMITS	COUNTY BOUNDARY

Year of last complete inventory - 1987
The last assigned road number is 52



Legend	
Railroad	
Bridge	
School	
Cemetery	
City, Village Town Hall	
Airport	
Unincorporated	

