

**SEND TO
COUNTY CLERK**

WISCONSIN DEPARTMENT OF TRANSPORTATION
TOWN PLAT RECORD

Town_LITTLE GRANT County_GRANT(22-032)

DATE OF LAST CORR.	STATE TRUNKS	COUNTY TRUNKS	LOCAL ROADS
1-1-89			
1-1-87		11.83	42.54
1-1-88		11.83	42.54

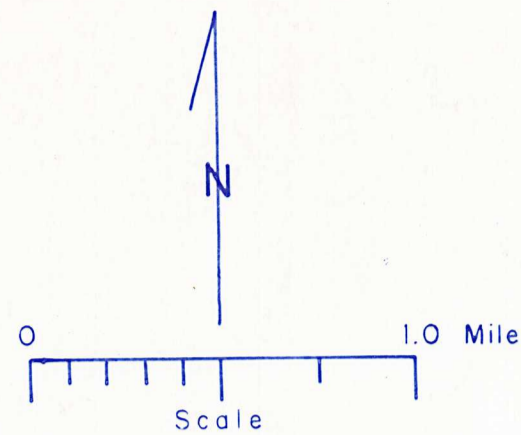
LEGEND	
US & STATE HIGHWAYS	CORPORATE LIMITS
COUNTY TRUNK HWYS.	COUNTY BOUNDARY
LOCAL ROADS	STATE BOUNDARY
CEMETERY	AIRPORT BOUNDARY
UNINCORPORATED VILLAGE	AIRPORT CITY
	RURAL

Certified as Correct

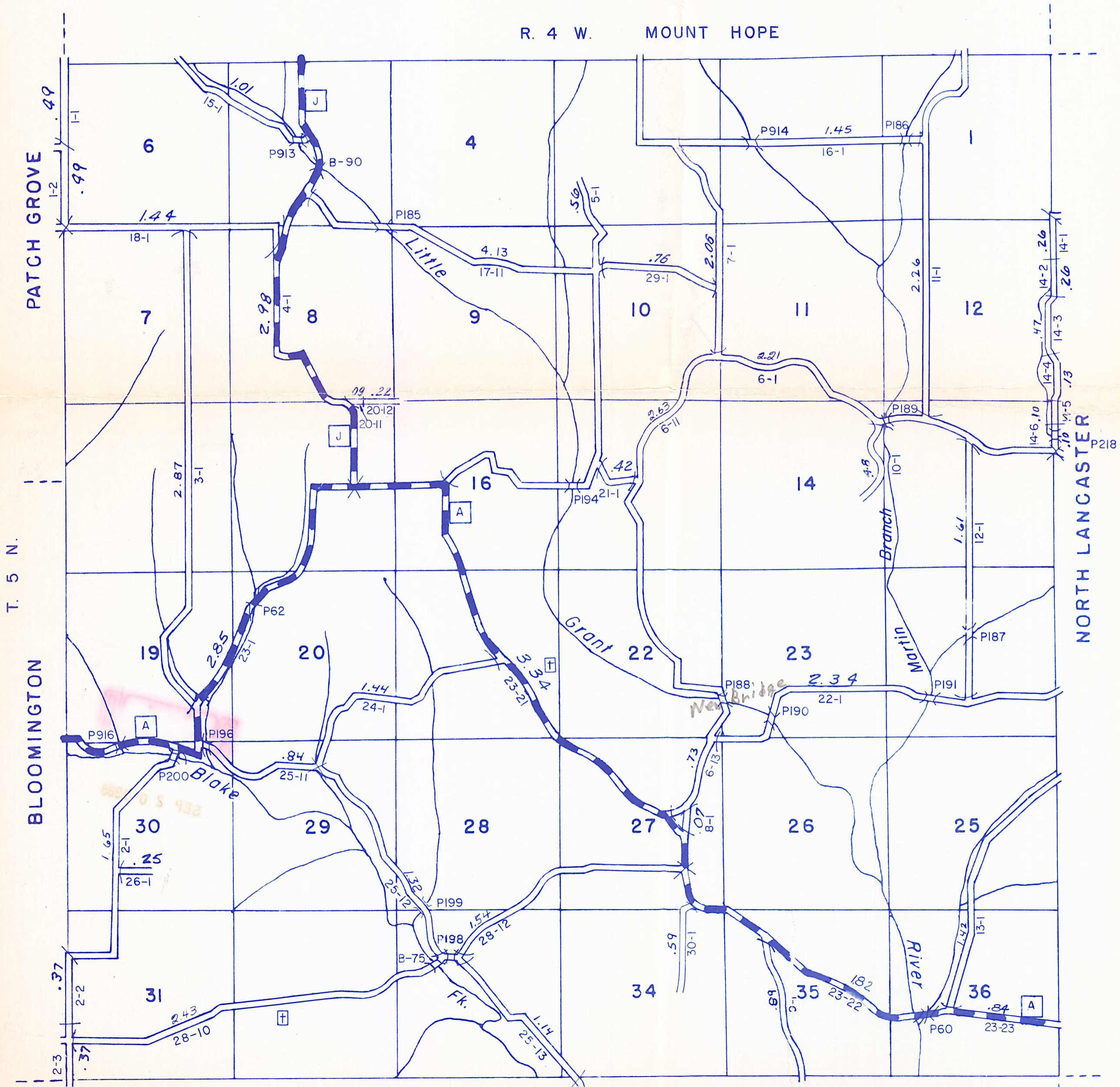
Michelle L. Levin
Signature

Title

YEAR OF LAST COMPLETE INVENTORY - 1987



R. 4 W. MOUNT HOPE



The last assigned road number is 30.

BEETOWN

LITTLE GRANT