

VILLAGE OF
DICKEYVILLE
 TOWN: PARIS
 COUNTY: GRANT
 (22-116)

DATE	MILEAGE FOR LOCAL ROADS/STREETS	LOCAL ROADS/STREETS
(1) 4-1-96	4.58	Certified In accordance with sec. 86.30 Wls. stat. Signature: <i>Valerie Schuety</i> Date: 10-2-97 Title: <i>Clerk-Treas.</i>
(2) 1-1-98	4.61	
(3) 4-1-98		

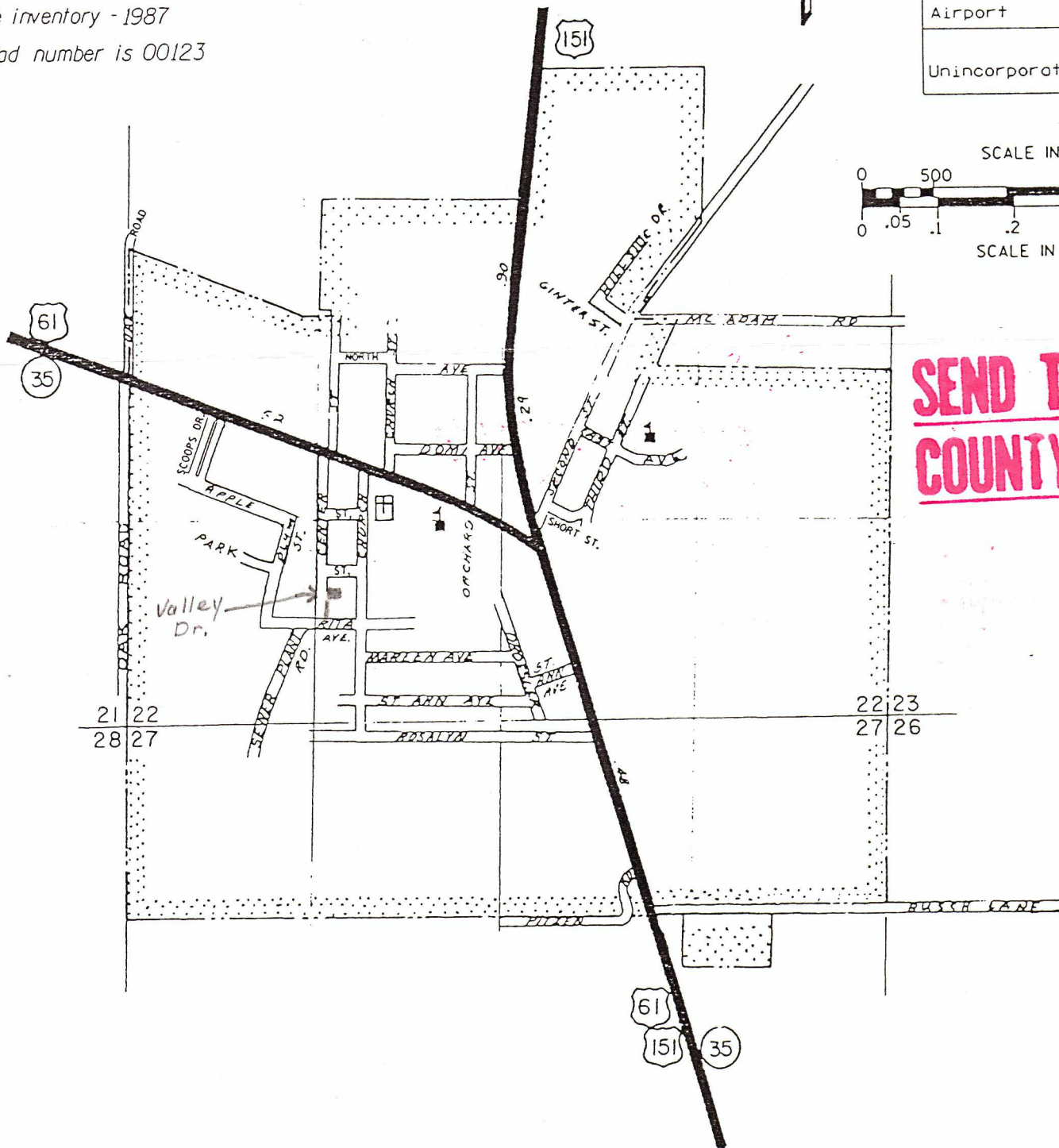
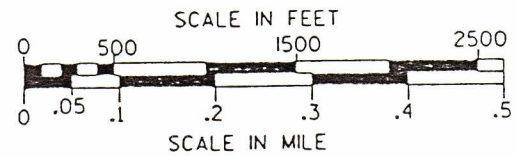
- (1) THIS DATA REPRESENT THE LAST CERTIFIED MILEAGE AS CORRECTED BY THE DISTRICT WHICH MAY HAVE BEEN USED FOR PAST TRANSPORTATION AIDS.
- (2) THE TOWN CHAIRMAN OR CITY/VILLAGE CLERK IS TO FILL IN THE MILEAGE TO BE CERTIFIED AS OPEN TO THE PUBLIC AS OF THE FOLLOWING JANUARY, INCLUDING THE NEW CHANGES THAT ARE MADE ON THE PLAT.
- (3) THIS DATA REPRESENTS MILEAGE ADJUSTMENTS MADE BY THE D.O.T. DISTRICT DUE TO FIELD VERIFICATION, INVENTORY, ANNEXATION, ETC. TRANSPORTATION AIDS PAYMENTS MAY BE MADE BASED ON THIS FIGURE.

Legend

Railroad	++++
Bridge	—/—
School	■
Cemetery	⊕
City, Village Town Hall	⬜
Airport	✈
Unincorporated	○

LEGEND							
STATE TRUNKS	CONN. HIGHWAY	COUNTY TRUNKS	LOCAL ROAD/STREETS	RUSTIC ROAD	Non-pay ROAD/STREETS	CORPORATE LIMITS	COUNTY BOUNDARY

Year of last complete inventory - 1987
 The last assigned road number is 00123



**SEND TO
 COUNTY CLERK**