

LEGEND

SYMBOL DESCRIPTION	SYMBOL	NAME STYLE
International boundary	[Thick red line]	INTERNATIONAL
American Indian area	[Light blue shaded area]	AMERICAN INDIAN AREA
State boundary ¹	[Thick yellow line]	STATE
County boundary ¹	[Thick orange line]	COUNTY
Minor Civil Division boundary ²	[Thick green line]	Minor Civil Division
Incorporated Place boundary ³	[Thick blue line]	Incorporated Place
Consolidated City boundary	[Thick purple line]	Consolidated City
UNCERTAIN BOUNDARY ⁴	[Dashed line]	
Interstate and Limited Access Highway	[Double red line]	Interstate and Limited Access Highway
U.S. Highway or State Road	[Single red line]	U.S. Highway or State Road
County or Connecting Road	[Thin red line]	County or Connecting Road
Neighborhood Road or City Street	[Thin black line]	Neighborhood Road or City Street
Jeep Trail	[Dashed black line]	Jeep Trail
Private Road	[Thin black line]	Private Road
Walkway or Stairway	[Dashed black line]	Walkway or Stairway
Ferry	[Thin black line]	Ferry
Railroad	[Black line with cross-ticks]	Railroad
Pipeline or Power line	[Black line with cross-ticks]	Pipeline or Power line
Perennial Stream	[Blue line]	Perennial Stream
Intermittent Stream	[Blue line with dashes]	Intermittent Stream
Physical Feature	[Black line]	Physical Feature
Nonvisible Boundary	[Dotted line]	Nonvisible Boundary
Airport	[Black line]	Airport
Corporate Corridor ⁵	[Red line]	Corporate Corridor
Offset Corporate Boundary	[Red line]	Offset Corporate Boundary
Corporate Corridor	[Red line]	Corporate Corridor
Lake	[Blue shaded area]	Lake
Military	[Grey shaded area]	Military
Jail	[Grey shaded area]	Jail
Airport	[Grey shaded area]	Airport
Golf Course	[Green shaded area]	Golf Course
Cemetery	[Green shaded area]	Cemetery
Park/National Park	[Green shaded area]	Park/National Park
Inset	[Red shaded area]	Inset

¹ State or County; or their equivalent area for statistical purposes.
² A five-spoked asterisk following a minor civil division name indicates that the minor civil division is coextensive with an incorporated place. The text MCD* indicates an incorporated place that is equivalent to an MCD.
³ All incorporated places are randomly colored.
⁴ Boundary shape (for any entity type) that was changed during coordinate enhancement. Please review this section closely.
⁵ An offset boundary parallels one side of an existing road or other feature such that no structure can exist between the boundary and the feature. If offset boundaries exist on both sides of a feature, it is called a corporate corridor.

Notes:
 A **blue** linear feature signals an unnamed road. Unnamed roads displayed in black do have names in the Census Bureau's database. Annotation on this map is not essential.
 Secondary names enclosed in parentheses denote alternate feature names.

KEY TO LINEAR FEATURE NAMES

1 US Hwy 49 (Lincoln Ave)	9 US Hwy 52 (Grant River Rd)	17 Grand St (US Hwy 40)	25 12th St (US Hwy 35)
2 US Hwy 52 (US Hwy 49)	10 S US Hwy 52 (US Hwy 52)	18 US Hwy 41	26 W Main St (US Hwy 35)
3 US Hwy 49 (US Hwy 52)	11 N Hwy 52 (US Hwy 52)	19 E Wisconsin St (US Hwy 40)	27 S Madison St (US Hwy 40)
4 US Hwy 52 (US Hwy 20)	12 Barkley Parkway Rd (US Hwy 52)	20 US Hwy 38 W (US Hwy 40)	28 E US Hwy 38 (US Hwy 40)
5 Jaxon Barkley Strip (US Hwy 52)	13 Central Ave (US Hwy 3)	21 US Hwy 41 and 30 (US Hwy 35)	29 US Hwy 41 S (Grant River Rd)
6 US Hwy 41 and 30 (Grant River Rd)	14 E Main St (US Hwy 3)	22 1st St (Hwy 40)	30 E Hwy 52 (US Hwy 40)
7 US Hwy 20 (Simpson Ave)	15 1st St E (US Hwy 52)	23 1st St (US Hwy 40)	31 US Hwy 38 (US Hwy 40)
8 US Hwy 38	16 N Andrew St (US Hwy 52)	24 Lincoln Ave (US Hwy 35)	

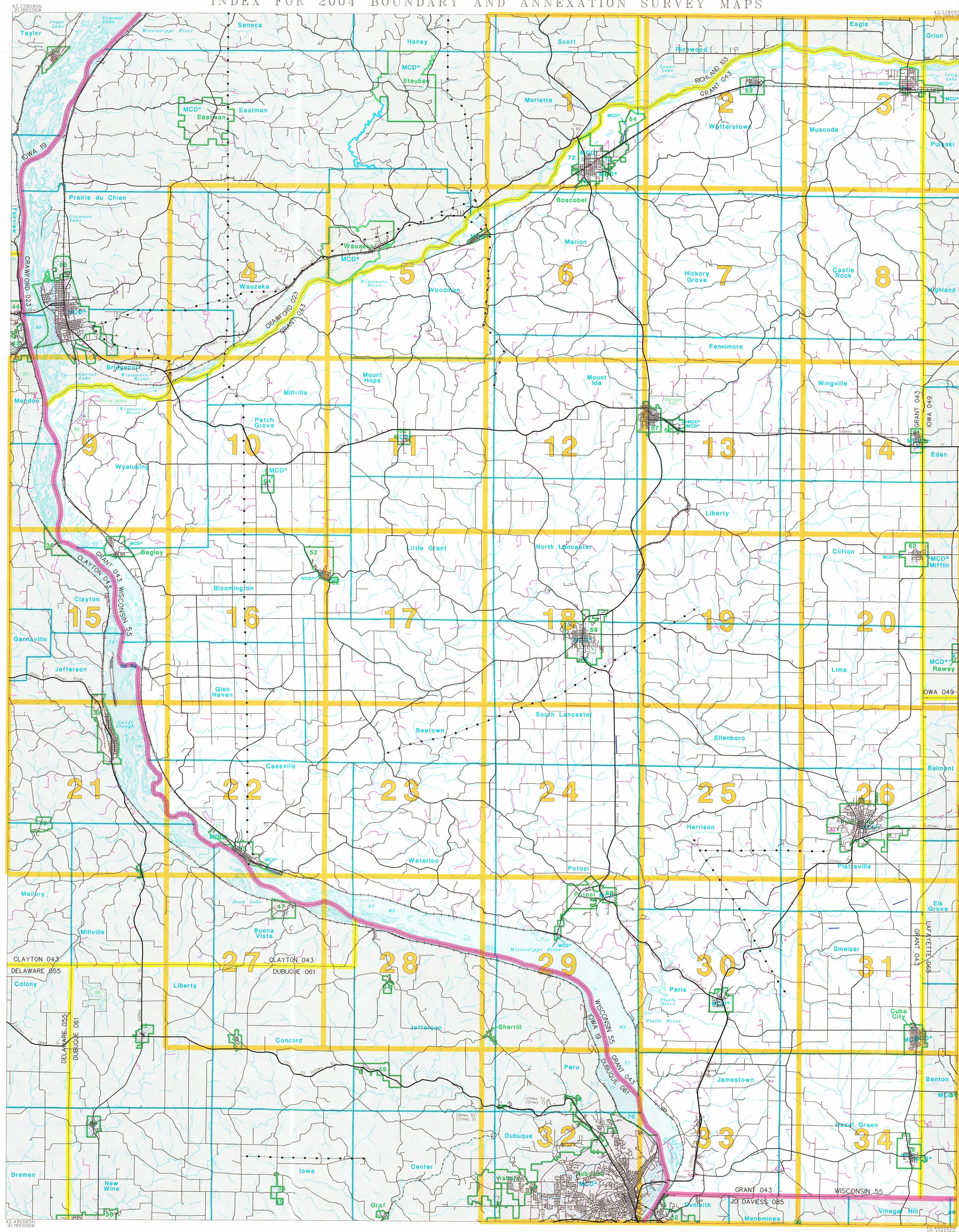
KEY TO GEOGRAPHIC NAMES

32 East Dubuque	43 McGregor	54 Boscobel	65 Prairie du Chien
33 Menominee	44 Marquette	55 Cassville	66 Tennyson
34 Balfour	45 Millville	56 Dickysville	67 Woodman
35 Bankston	46 New Vienna	57 Fennimore	68 Council Hill
36 Clayton	47 North Buena Vista	58 Hazel Green	69 Clayton
37 Durango	48 Osterdock	59 Lancaster	70 Dubuque
38 Dyersville	49 Rickardsville	60 Livingston	71 Prairie du Chien
39 Guttenberg	50 Sageville	61 Montfort	72 Boscobel
40 Harpers Ferry	51 Benton	62 Mount Hope	73 Muscoda
41 Holy Cross	52 Bloomington	63 Muscoda	74 Potosi
42 Luxemburg	53 Blue River	64 Patch Grove	75 South Lancaster

KEY TO AREAL FEATURE NAMES

76 Wisconsin River	79 Franktown Lake	82 Mc Carthy Lake	85 Plains Pine State Park	88 Wyalusing State Park
77 Mississippi River	80 Mc Gregor Lake	83 Upper Mississippi River	86 White Pine Hollow State Park	
78 Big Pond	81 Jack Oak Slough	84 Elfige Mounds Natl Monu	87 Nelson Dewey State Park	

INDEX FOR 2004 BOUNDARY AND ANNEXATION SURVEY MAPS



The boundaries shown on this map are for Census Bureau data collection and statistical purposes only. Their depiction does not constitute an acknowledgment of ownership or entitlement.

Date	Signature and Title	Telephone

SIGNATURE BOX

BASENTITY-ID: 25504300000
 ST: Wisconsin (55)
 COU: Grant County (043)

INDEX MAP (TOTAL PARENT SHEETS 34 TOTAL INSET SHEETS 0)
 (BAS04C0U) 05225043000000000000

2004